



A Quick Guide

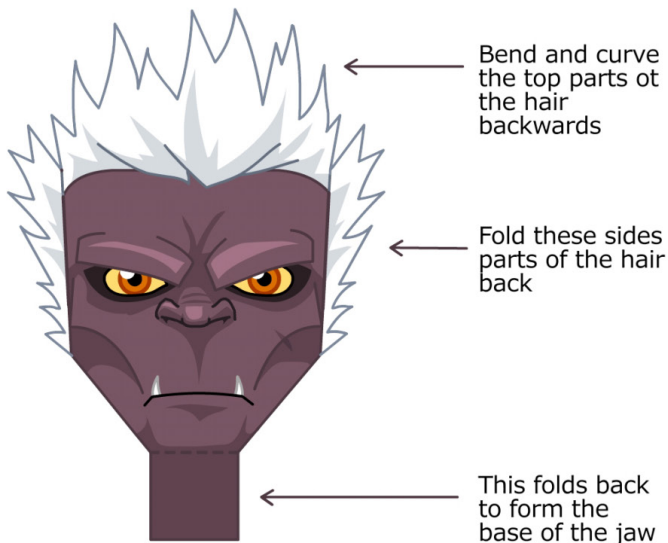
In case this is the first paper hero that you have tried making, here are some simple instructions that may make assembling it easier.

First, cover every tab on every bit of paper with double sided sticky tape. If you prefer you can glue parts together as you go along, but I find sticky tape less messy. When you cut out each part, make sure you look for any instructions. Then fold along all the dotted lines and fold all the tabs. You should begin to see how that part takes shape before you actually begin sticking it together.

Most importantly... enjoy yourself. Try not to get too frustrated if it isn't coming together straight away. Stick at it and the model will soon start to take shape.

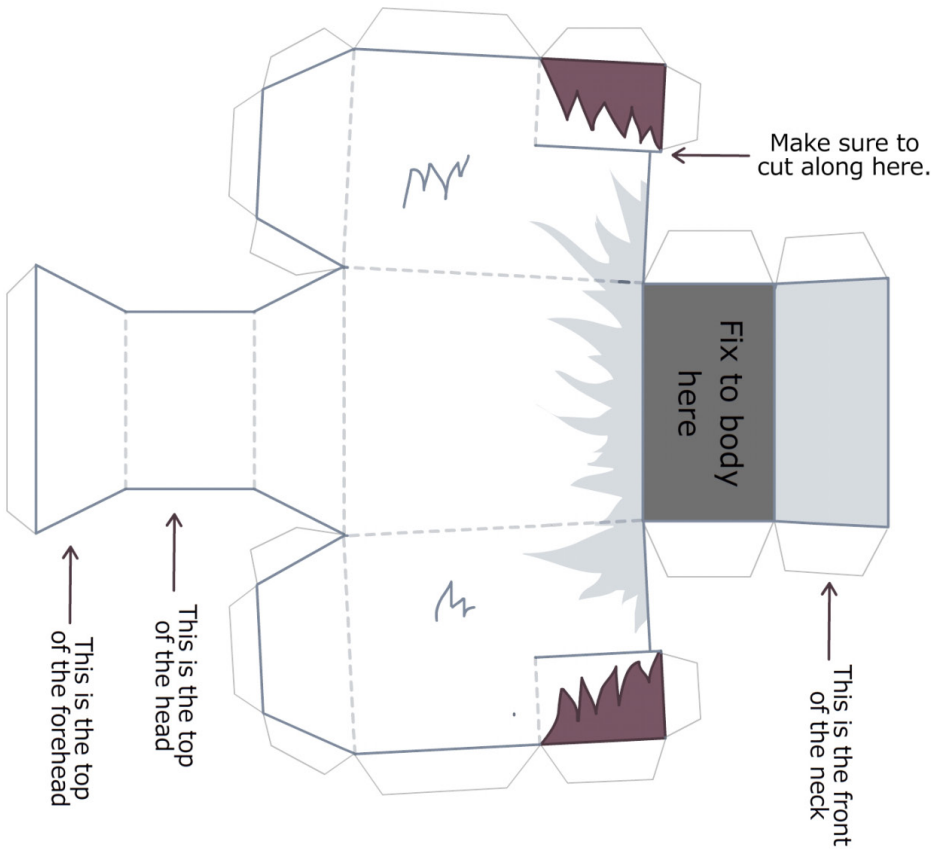
Face/Front of Head

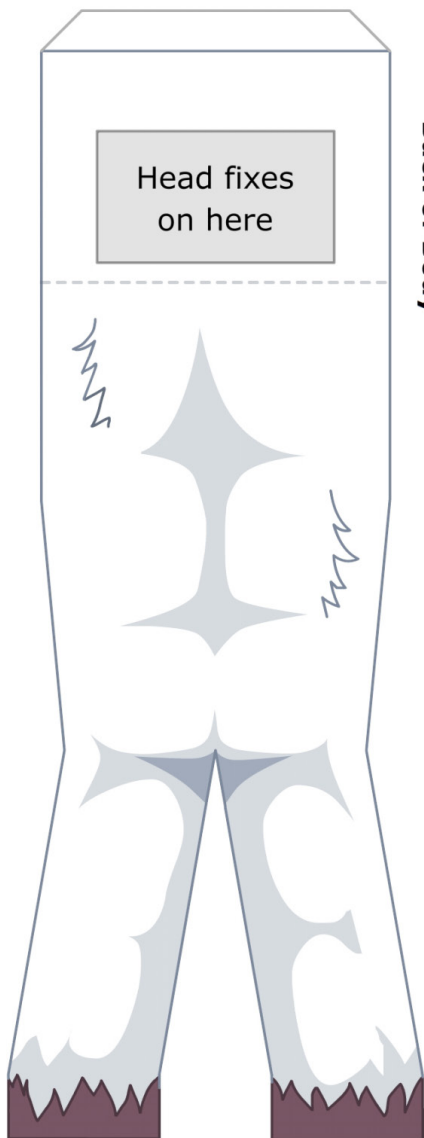
Build the whole rest of the head from the next page before adding this part to the model



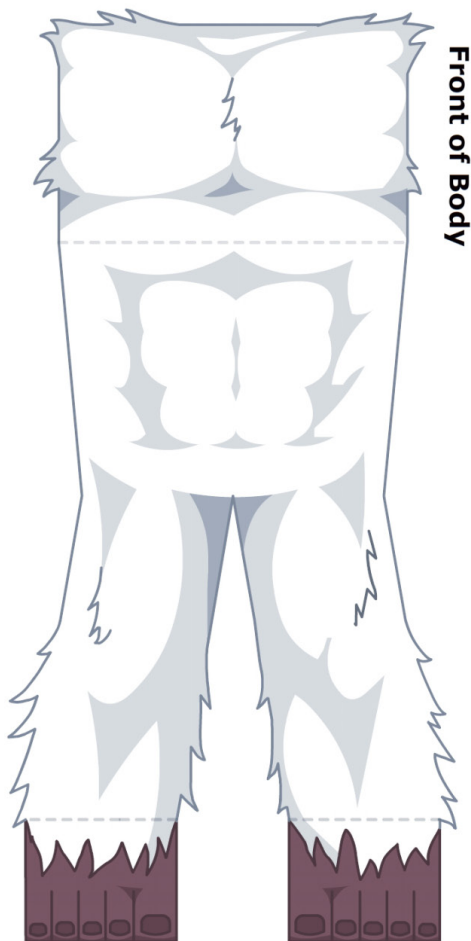
Back, top and sides of head.

Build this part first before adding the face/front of the head to the model

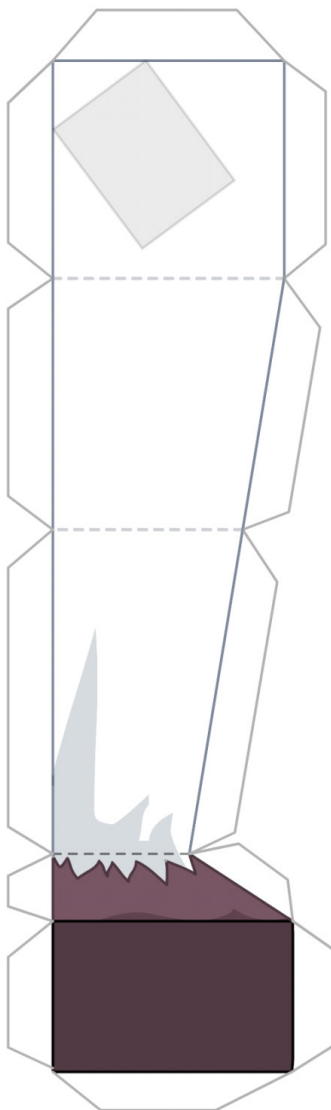




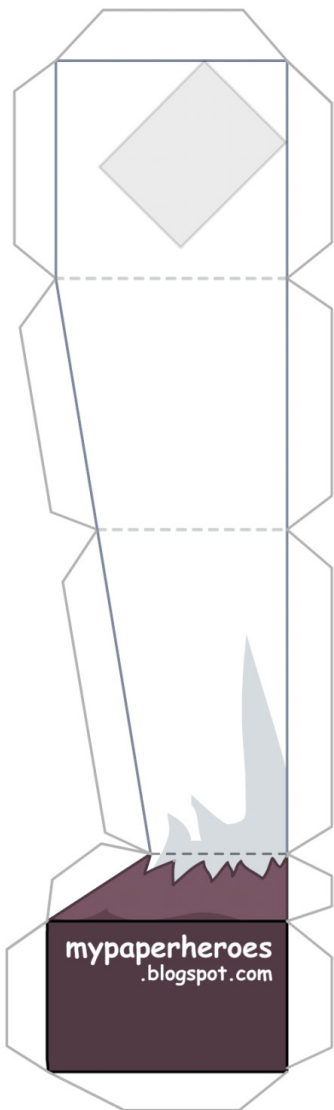
Begin work with the back of the body. Add the left and right sides and then add the inside of the legs. Once the whole back and sides have been built you can add the front to the body.



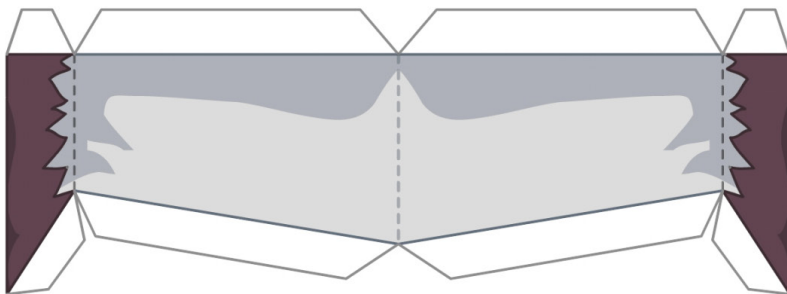
Right Side of Body



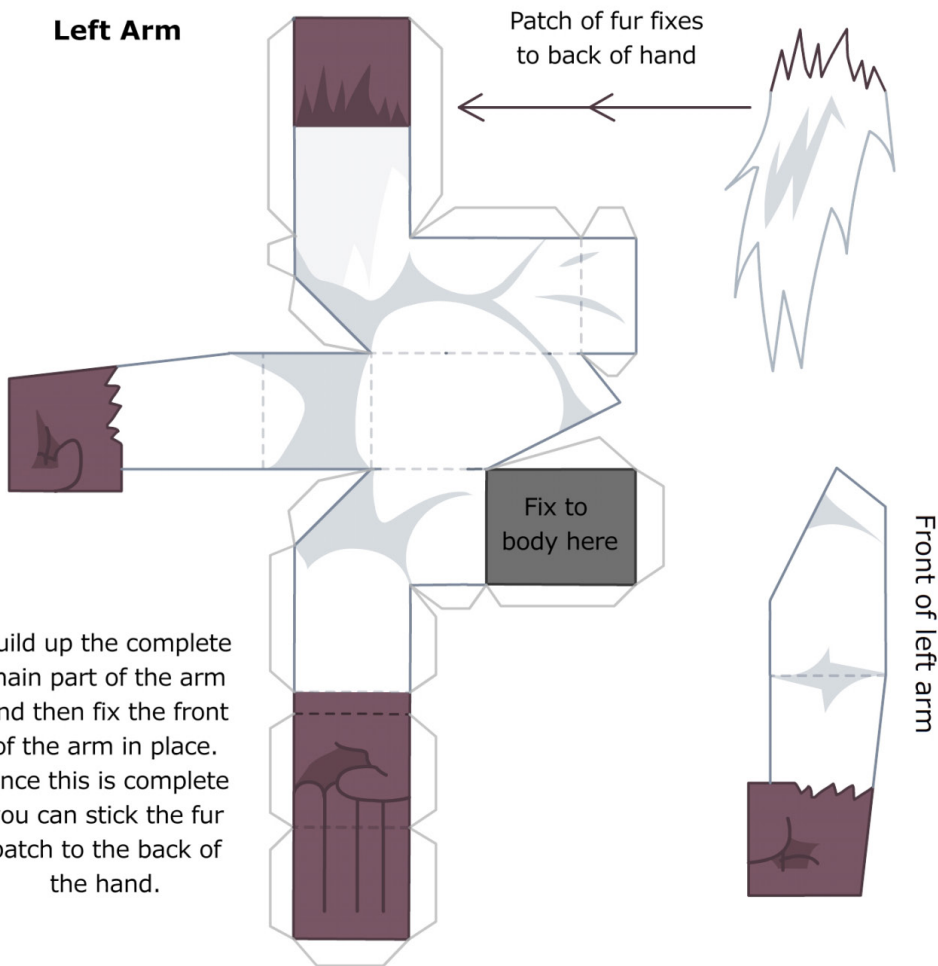
Left Side of Body



Inside of legs



Left Arm



Right Arm

Build up the complete main part of the arm and then fix the front of the arm in place. Once this is complete you can stick the fur patch to the back of the hand.

