

myPaperHeroes

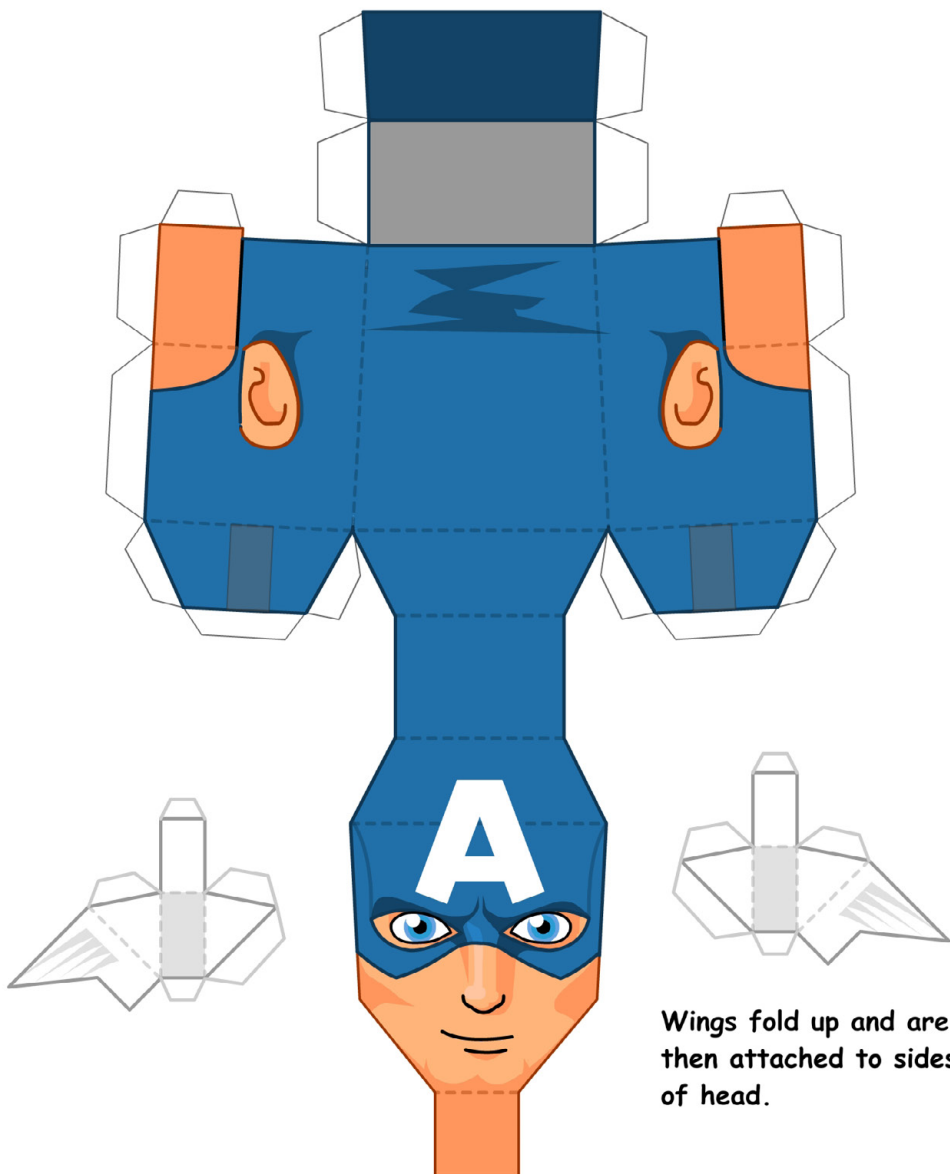
.blogspot.com

Make your own...

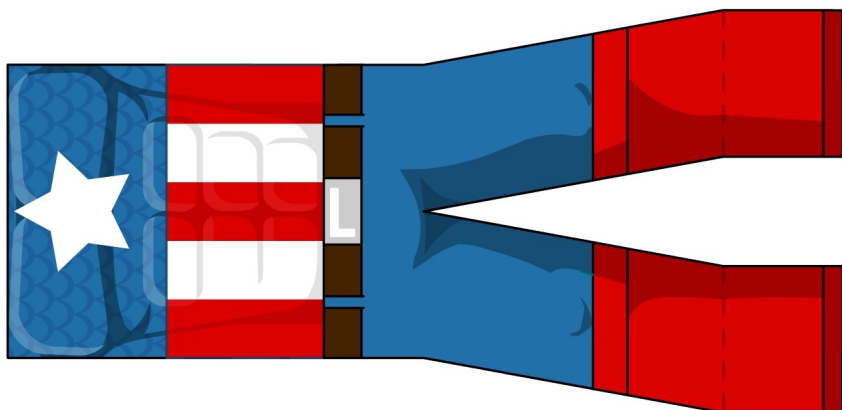
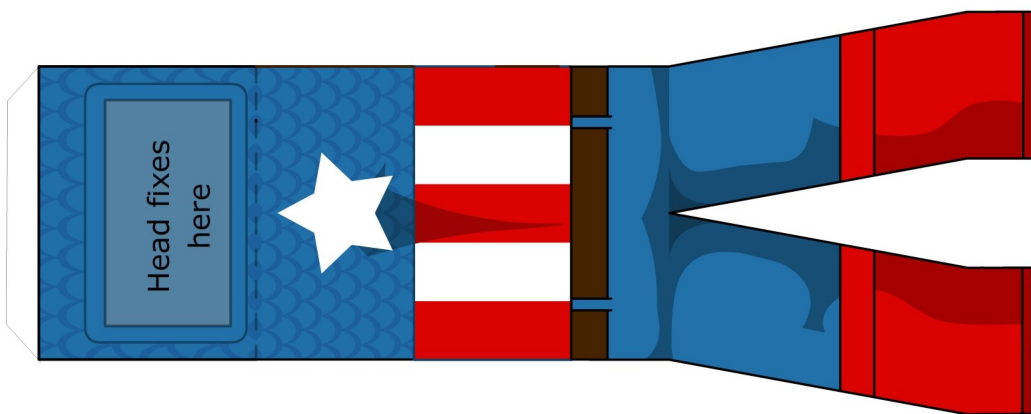
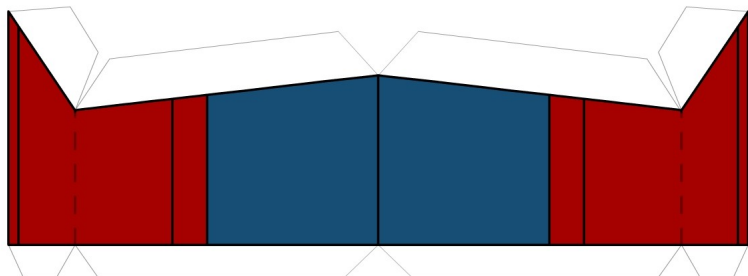
Captain America

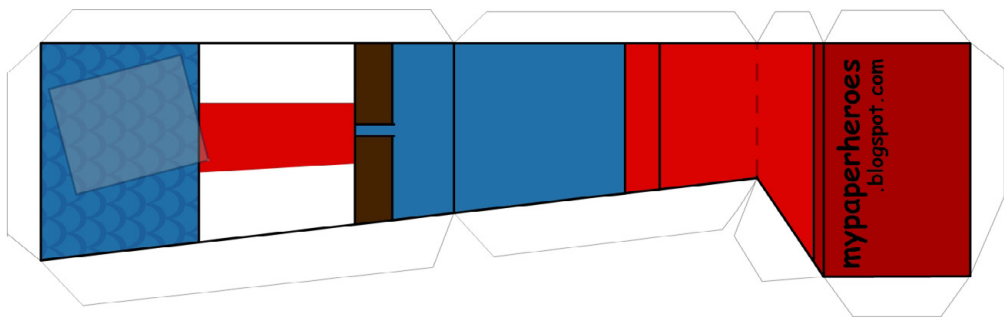
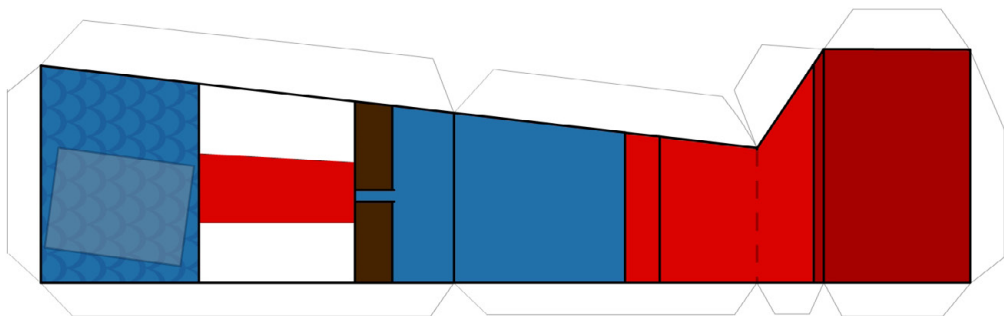


This is 3D Fan art and is in no way affiliated with the characters or the company that owns them. They are created in honour of the characters and for no commercial/financial gain, and as such can't be distributed for any financial gain either please.

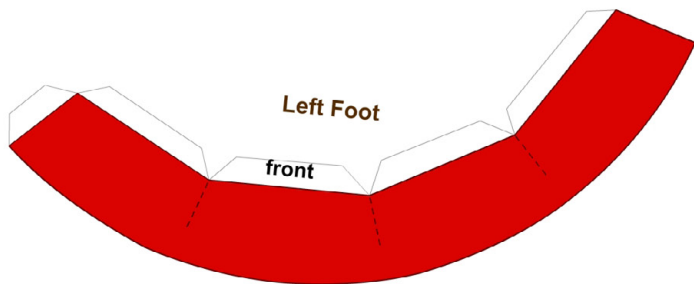
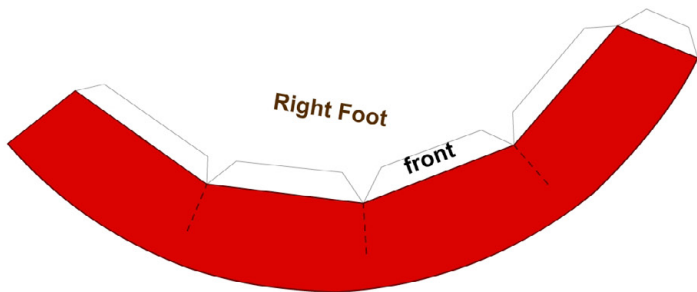


Wings fold up and are then attached to sides of head.

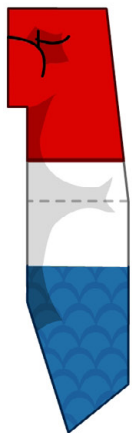
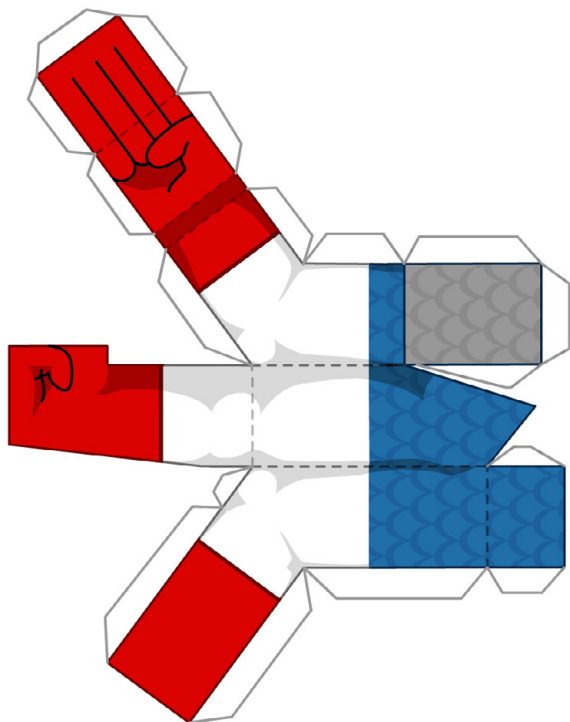




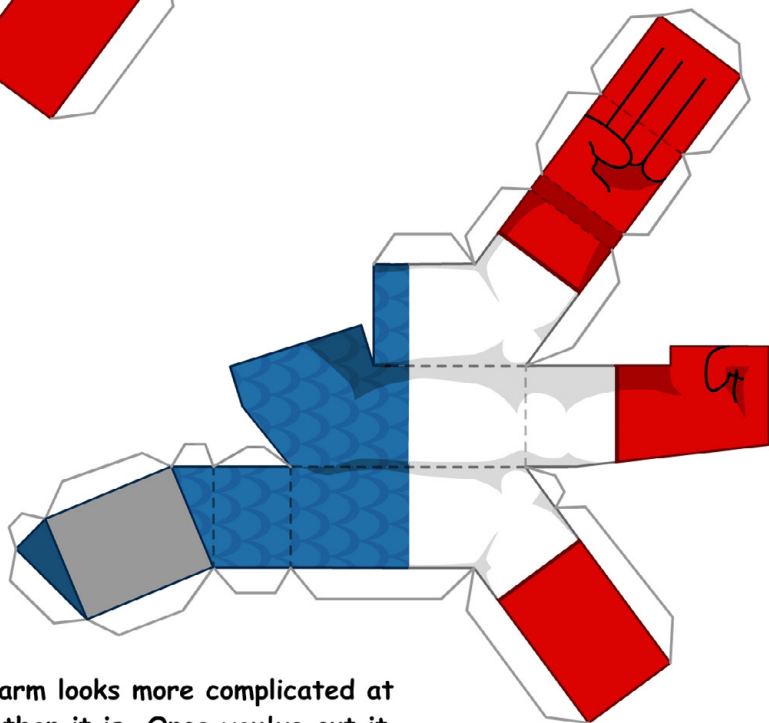
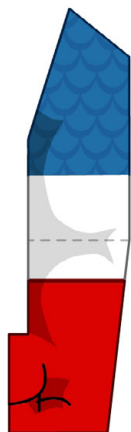
Optional Boot Cuffs wrap around each foot and attach to the top hem of the boot.



Right arm

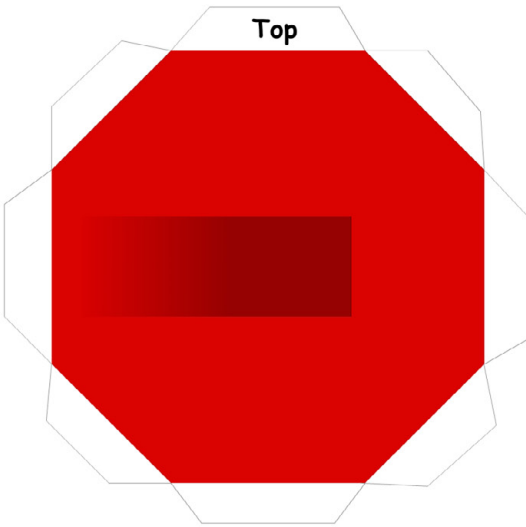


Left arm



This arm looks more complicated at first than it is. Once you've cut it out and creased all of the folds it should start to take shape.

Back of shield



Front of shield



IF you lose track of what ends the tops are, there is a light reflection across the front of the shield so you should still be able to tell which side joins with which.

