

myPaperHeroes

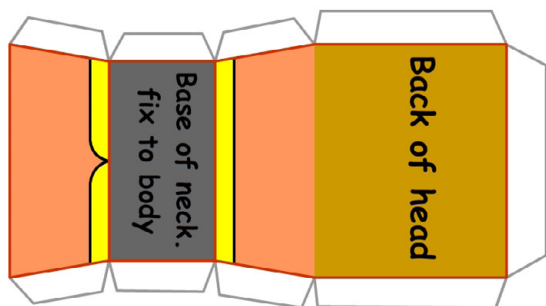
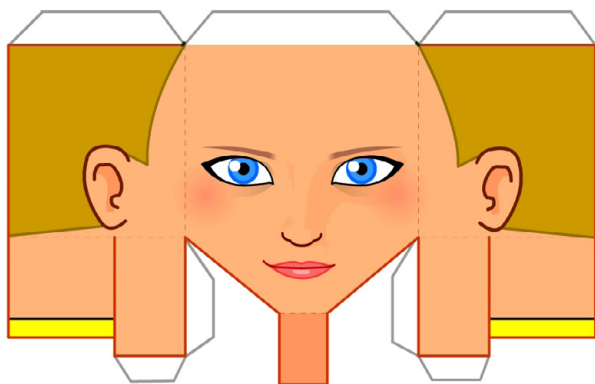
.blogspot.com

Make your own...

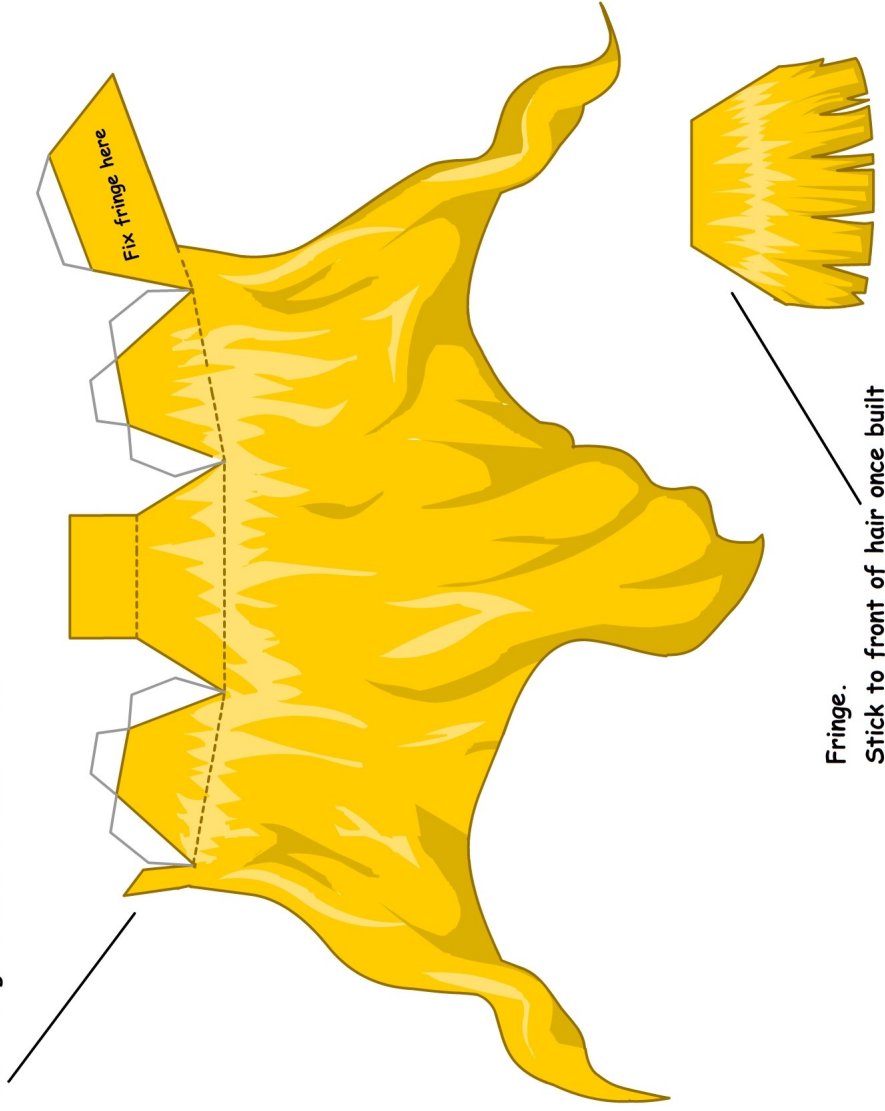
MAGiK



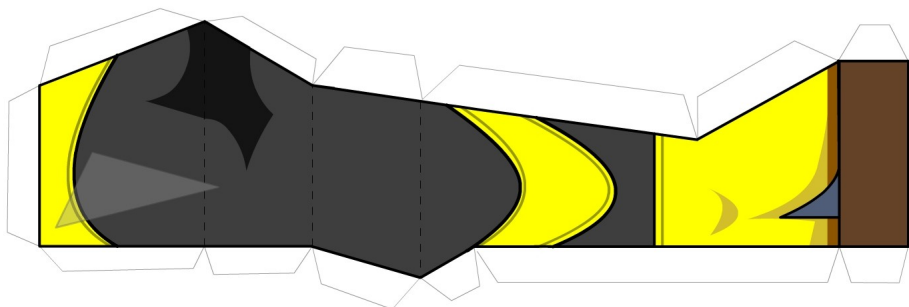
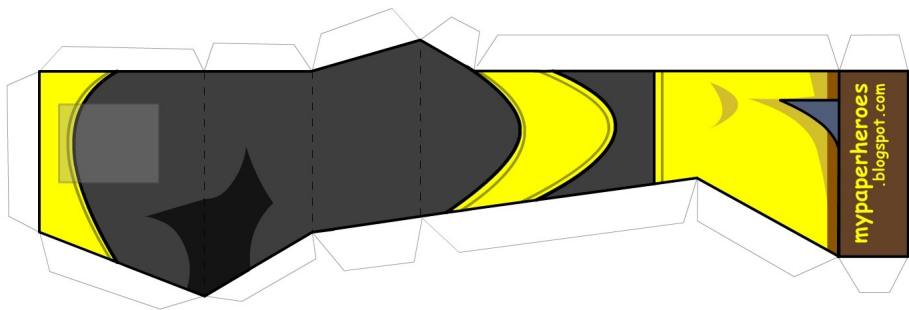
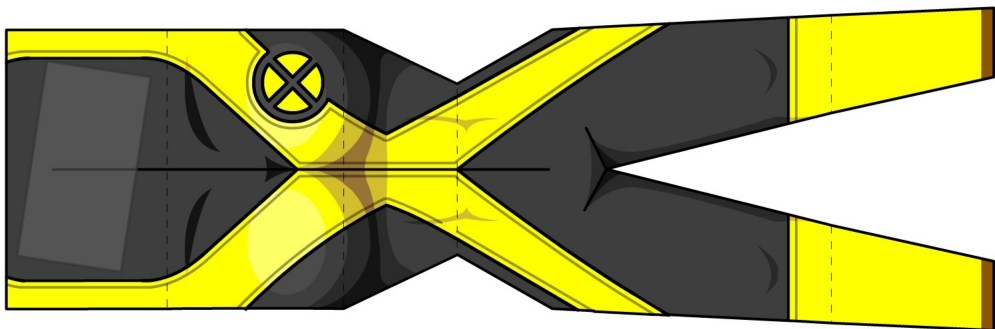
This is 3D Fan art and is in no way affiliated with the characters or the company that owns them. They are created in honour of the characters and for no commercial/financial gain, and as such can't be distributed for any financial gain either please.

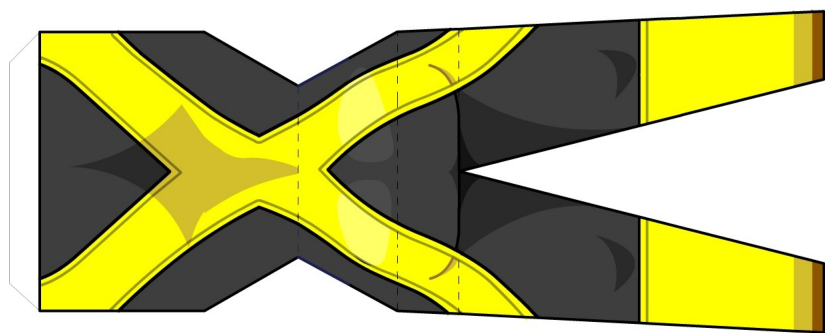
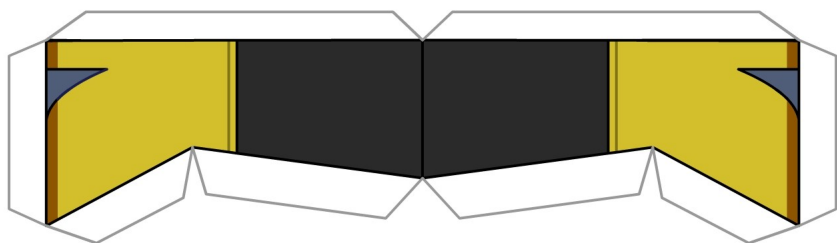


Fix tab to front of hair once hair is built,
before frings is stuck to front of hair

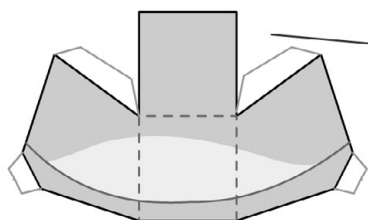
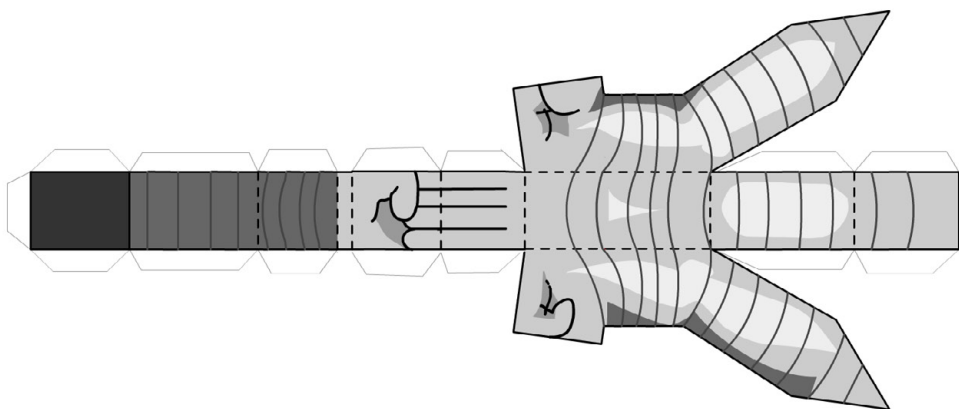


Fringe.
Stick to front of hair once built





Left Arm



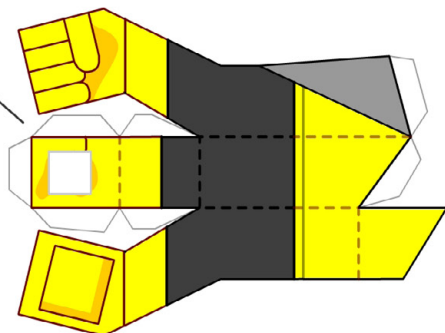
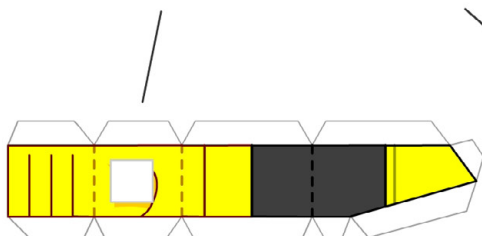
Fix top of shoulder pad down

then fix small tabs onto shoulder

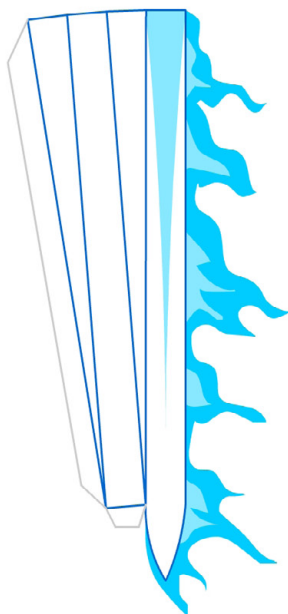
Right Arm

Sorry in advance, I know this bit is going to be quite fiddly and complicated.

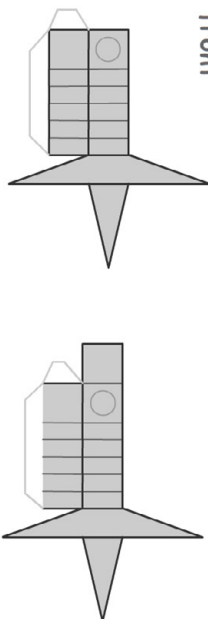
The white squares need to be cut out before you start building the arm.



Build sword blade separately



Build sword handle separately. The base is a cuboid. Ignore the pointy star shape on the front



When both have been built, the blade can be put on the front of the handle and the point bits stuck to the side of the blade to hold it in place.

