

myPaperHeroes

.blogspot.com

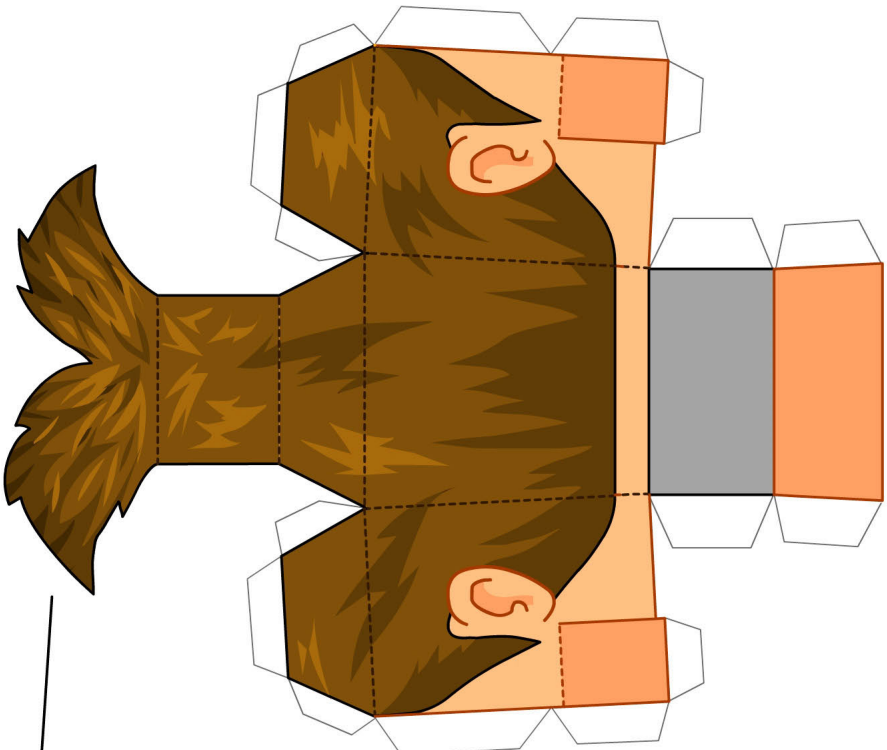
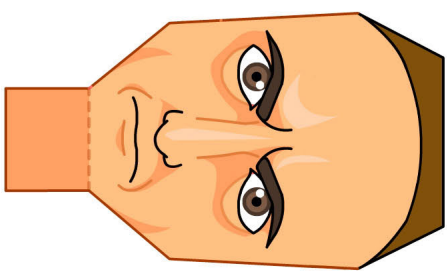
Make your own...

Doctor Octopus

Spider-Man 2 Movie Version

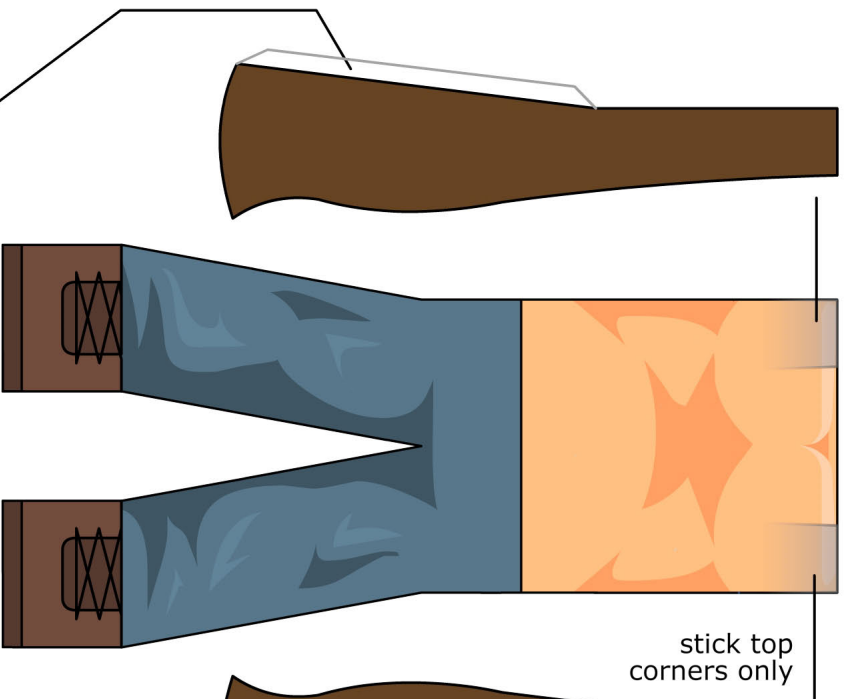


This is 3D Fan art and is in no way affiliated with the characters or the company that owns them. They are created in honour of the characters and for no commercial/financial gain, and as such can't be distributed for any financial gain either please.

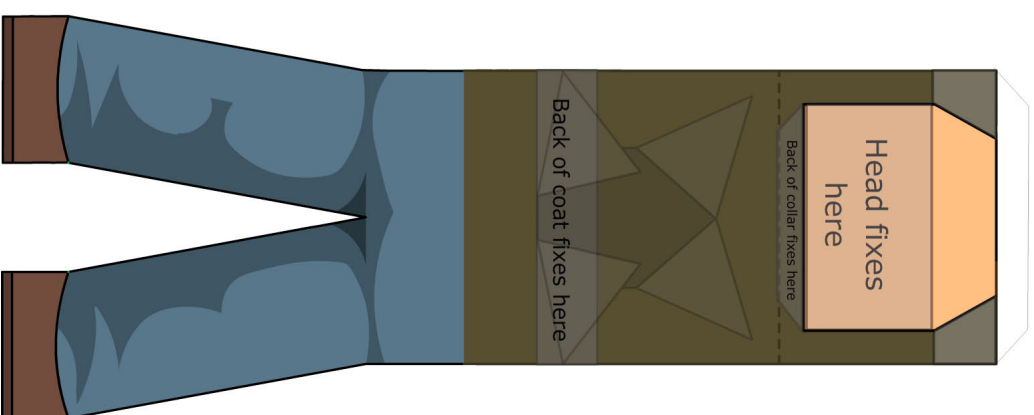


Top of hair stick to
sides of head once
head is built

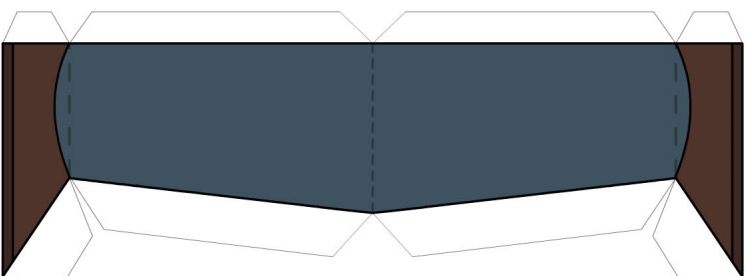
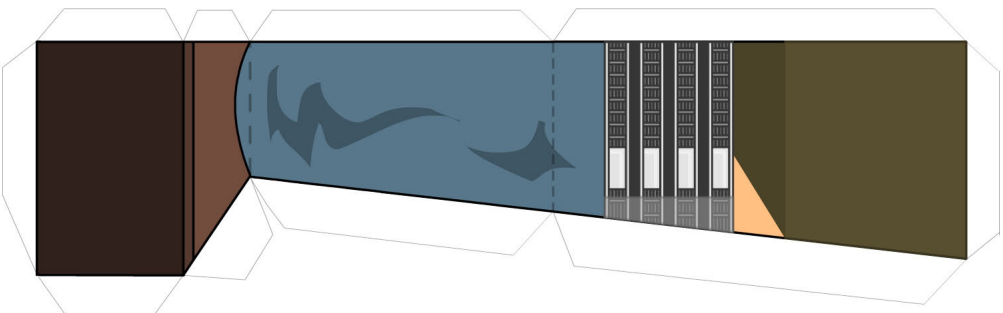
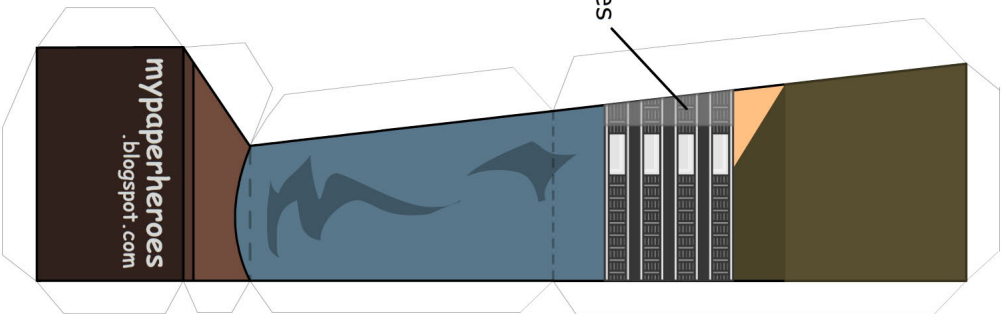
inner-jacket sections stick onto front of body
before main jacket is added.

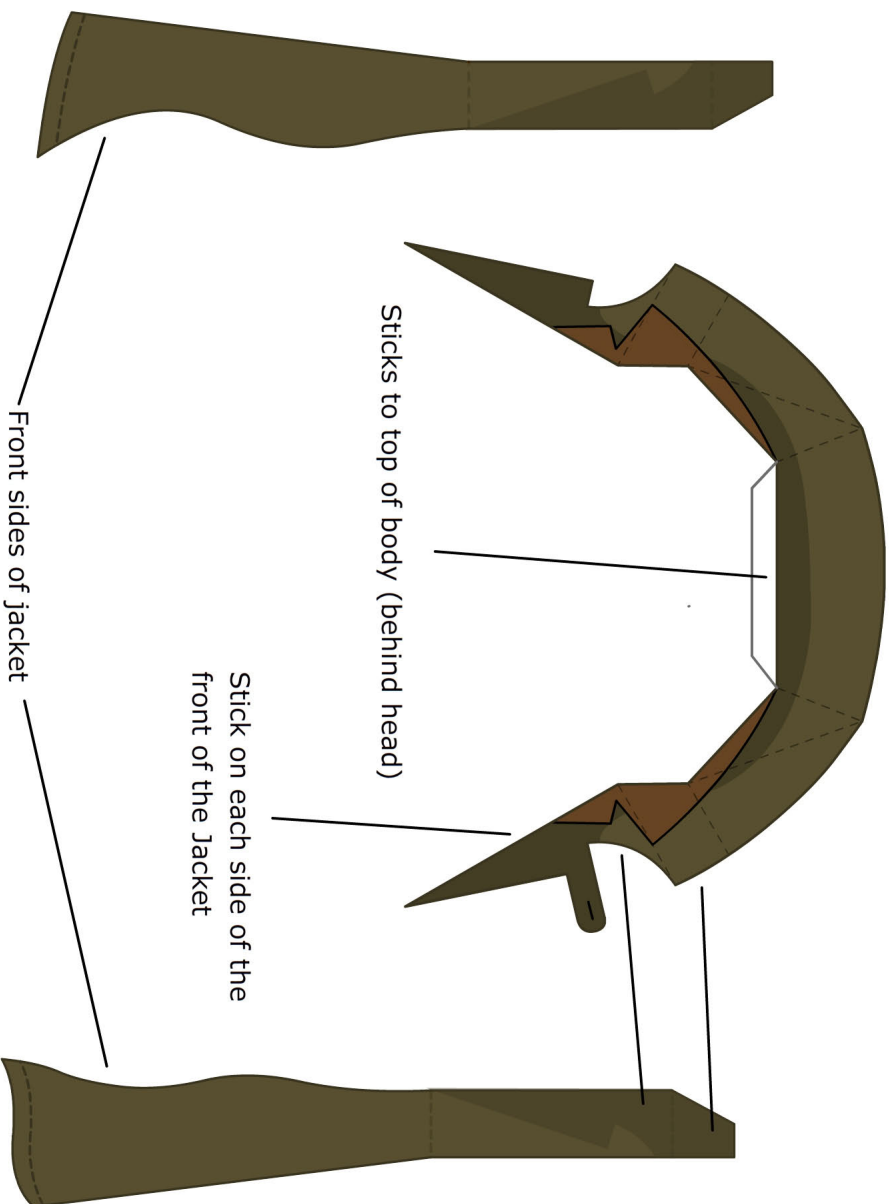


Once whole body and jacket are complete, these tabs fix to the
inside joints of the front of the jacket. This is by the tabs that
connect the sides of the jacket to the fronts of the jacket.

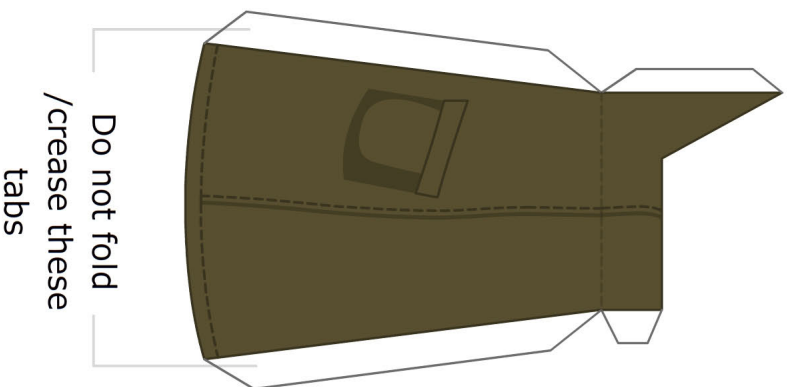


Belt attaches
over here

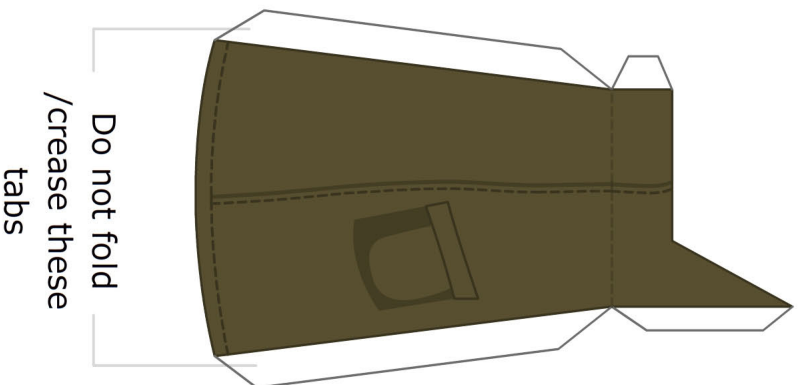




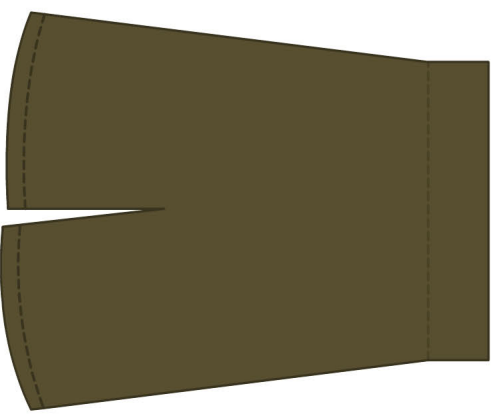
Left side
of coat

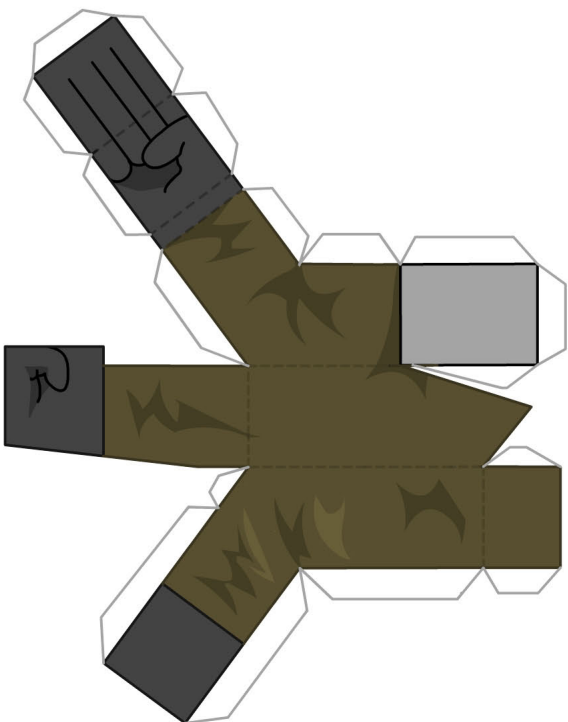
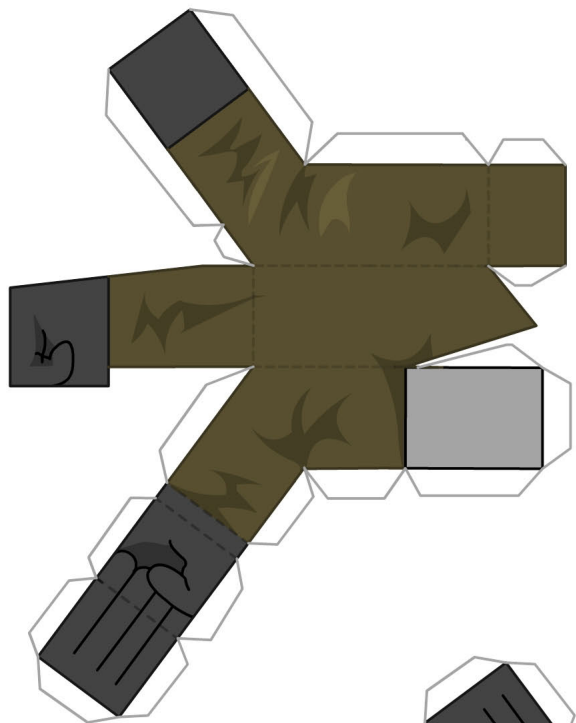


Right side
of coat



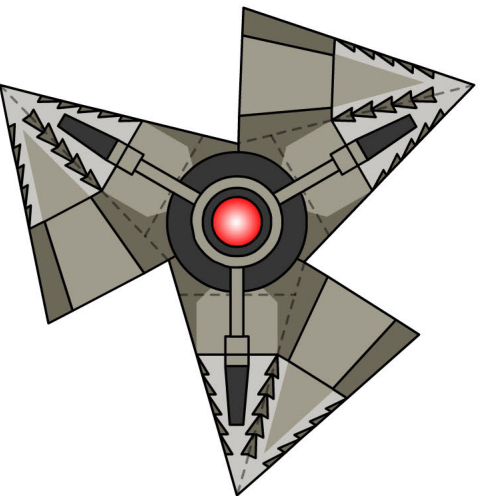
Back
of coat



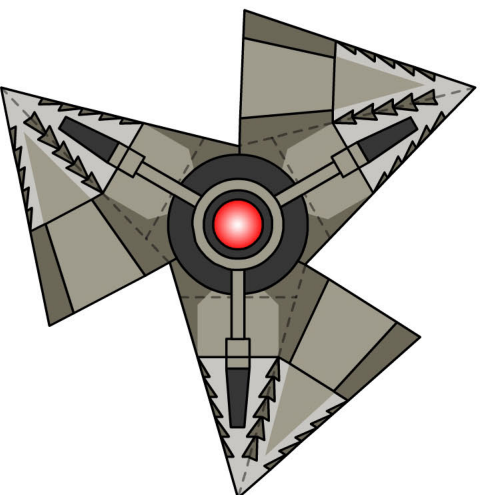


Cuff of jacket, wraps around wrist

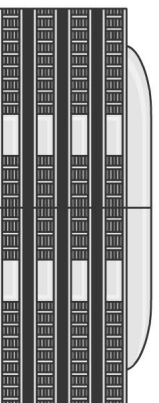
Top Tentacles -



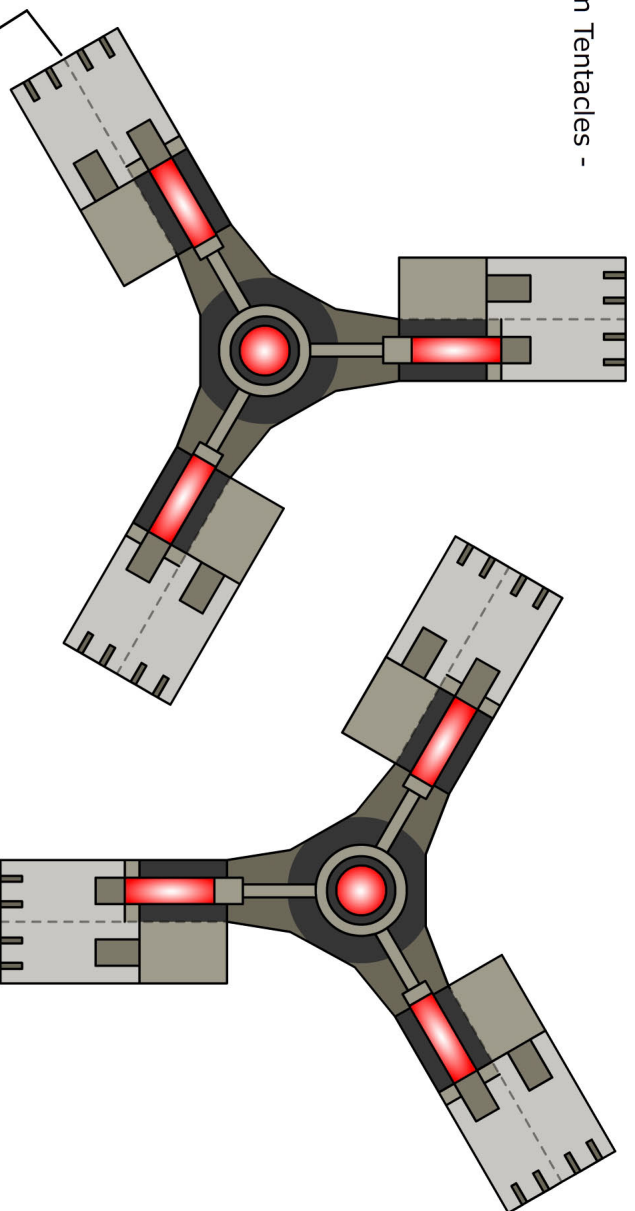
Fold right back along this line and then stick flat before folding the bends into the "claws".



Belt: Curves around stomach and attaches to each side of the body

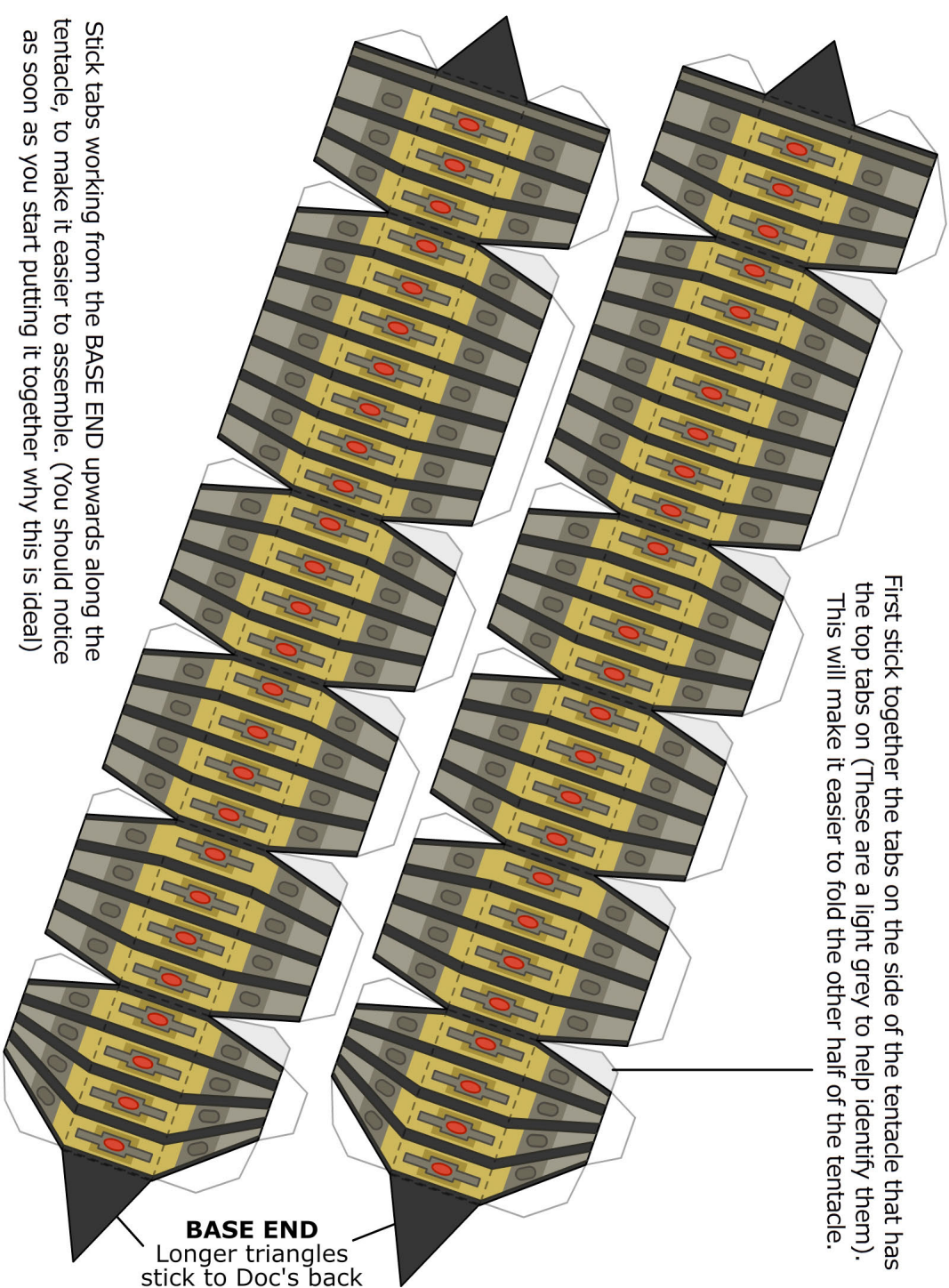


Bottom Tentacles -



Fold right back along this line and then stick flat before folding the bends into the "claws".

First stick together the tabs on the side of the tentacle that has the top tabs on (These are a light grey to help identify them). This will make it easier to fold the other half of the tentacle.

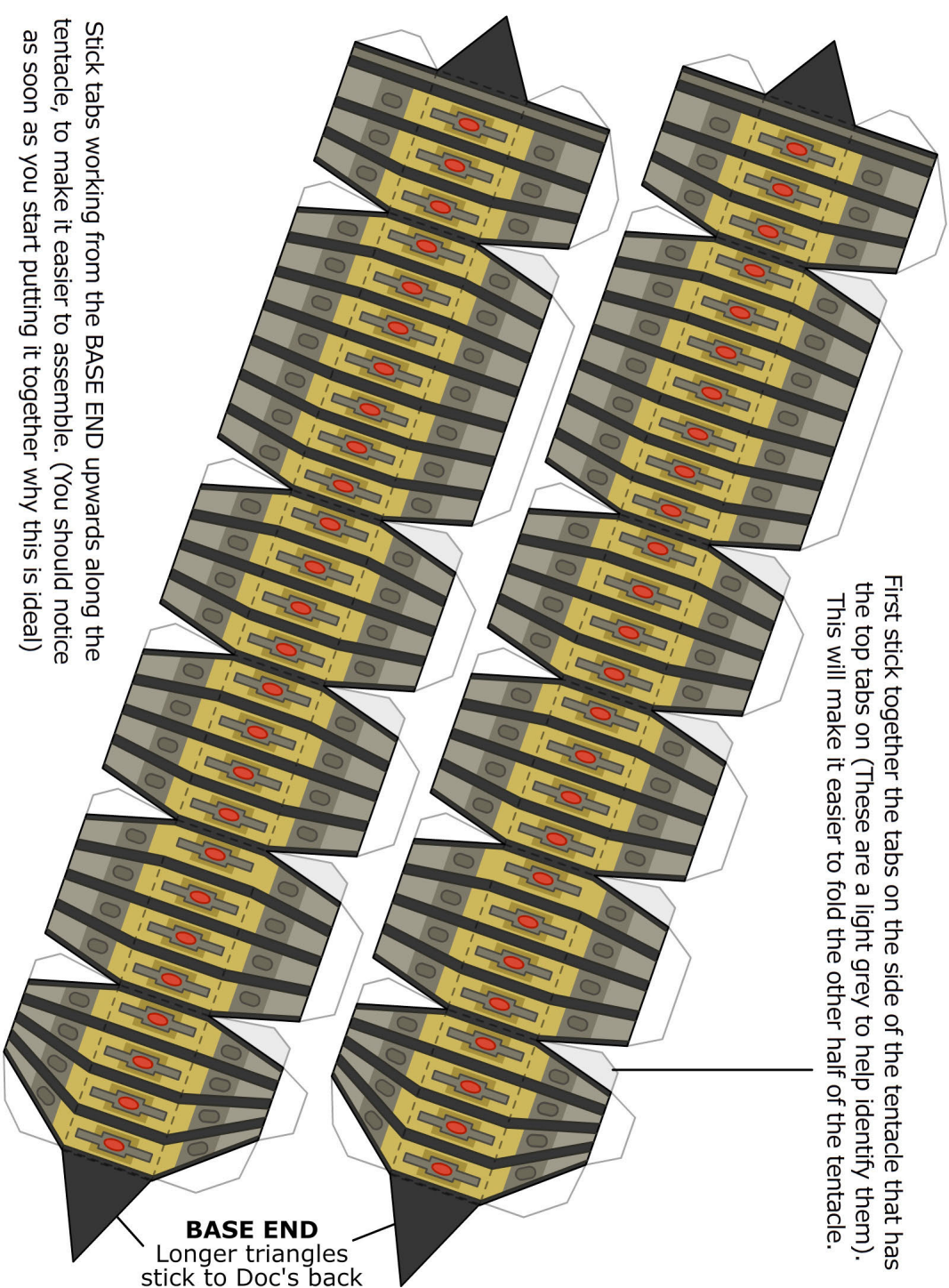


BASE END

Longer triangles
stick to Doc's back

Stick tabs working from the BASE END upwards along the tentacle, to make it easier to assemble. (You should notice as soon as you start putting it together why this is ideal)

First stick together the tabs on the side of the tentacle that has the top tabs on (These are a light grey to help identify them). This will make it easier to fold the other half of the tentacle.



BASE END

Longer triangles
stick to Doc's back

Stick tabs working from the BASE END upwards along the tentacle, to make it easier to assemble. (You should notice as soon as you start putting it together why this is ideal)