

myPaperHeroes

.blogspot.com

Make your own...

DARK KNIGHT RISES BANE



No Coat
Version

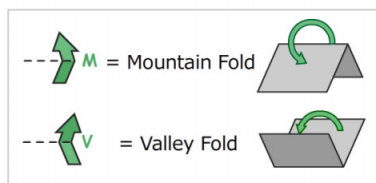
This is 3D Fan art and is in no way affiliated with the characters or the company that owns them. They are created in honour of the characters and for no commercial/financial gain, and as such can't be distributed for any financial gain either please.

Instructions

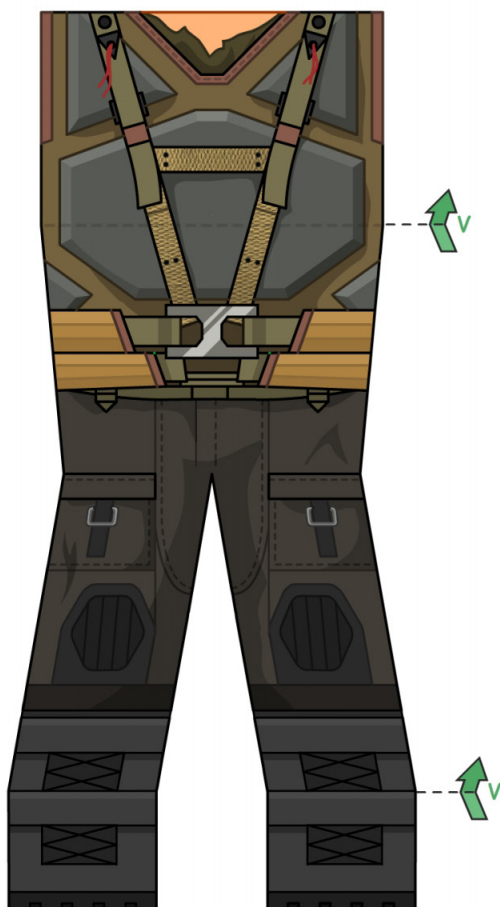
First, you need to print out all of these pages. You can use normal printing paper but I would recommend 160gm paper to add a bit more support.

Then, you need to cover all of the tabs in double sided sticky-tape. You can also add some tape to where the head and arms fix on to the body.

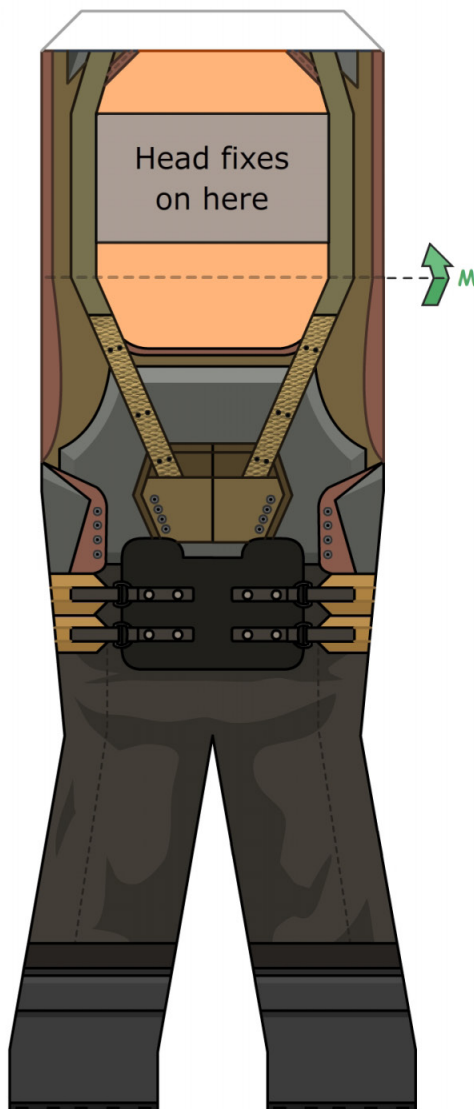
Next you need to carefully cut out each of the shapes and crease all of the folds, ready to begin putting together. Fold down all of the tabs too.



Front side of body



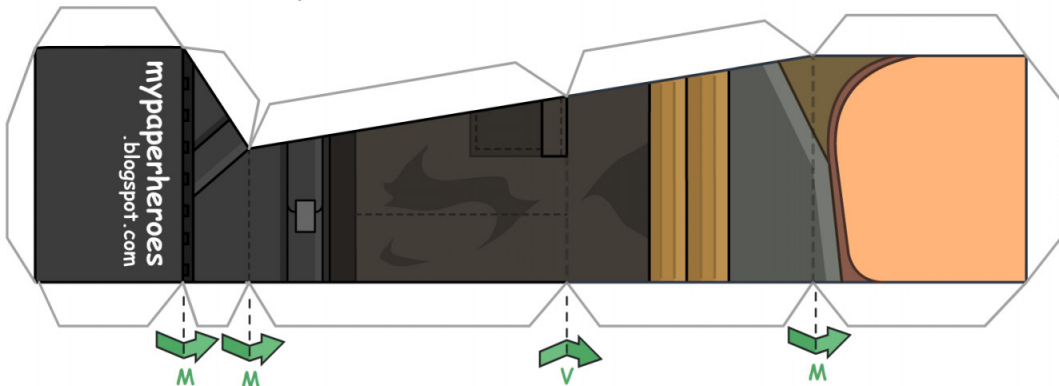
Back and top of body



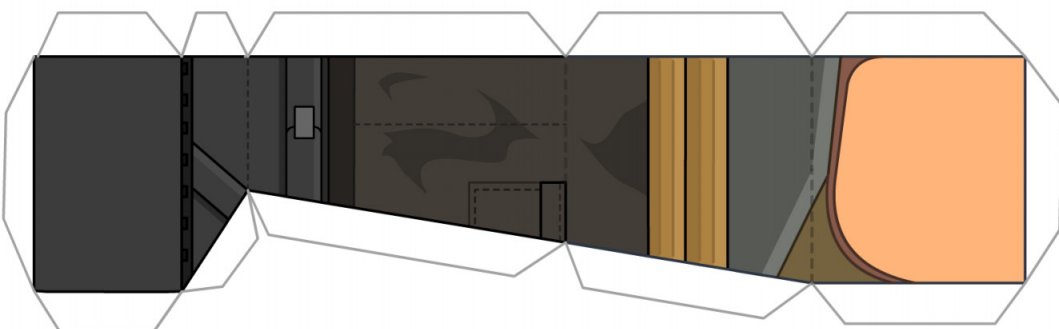
To piece together the body shape, it is best to start with the back face of the body. Stick the inside of the legs to the back of the body, and then stick on the sides of the body. Your body should now just be missing the front and top.

Add the front of the body, working from the inside of the legs first again. Stick down the front across the legs, working up the body until you can fix down the top too. Then the body is complete and you can add the bow-tie.

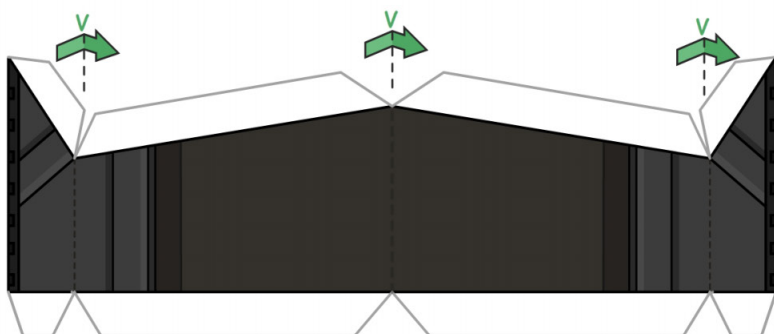
Left side of body



Right side of body



Inside of legs

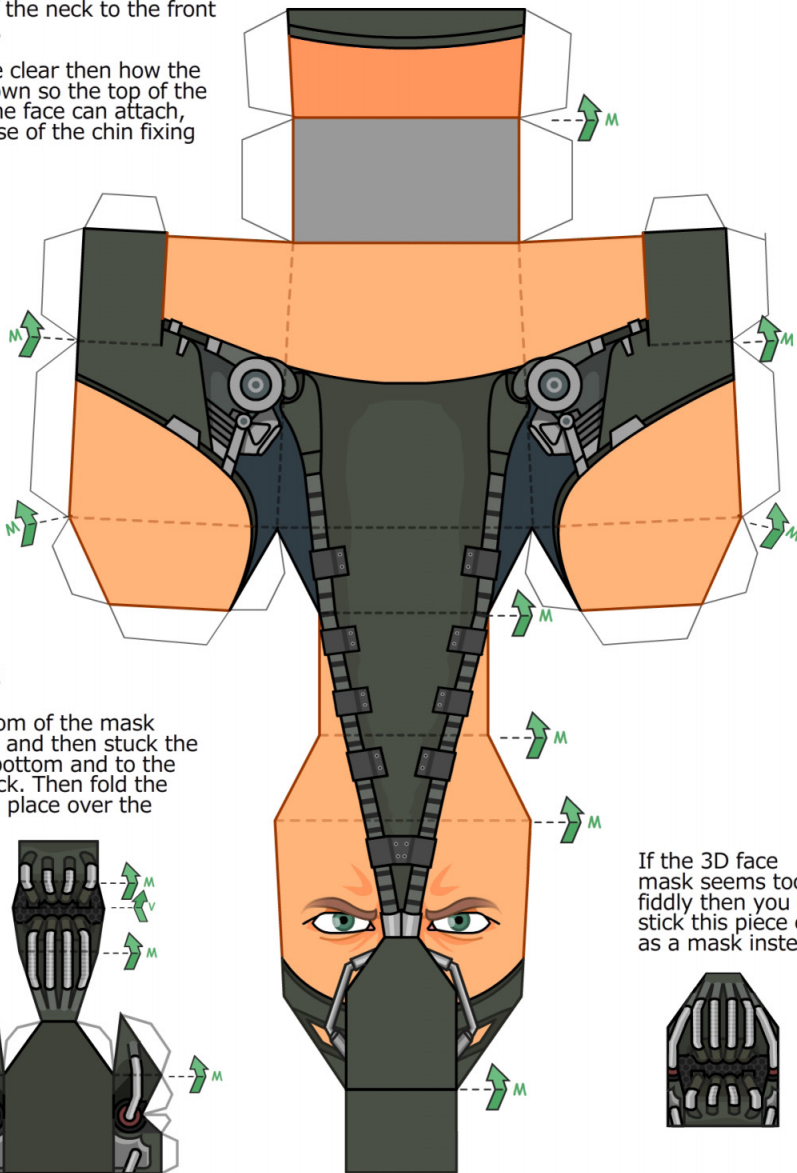


Head

All folds are Mountain folds on the head.

First stick the sides of the neck to the sides of the base. Then stick the sides of the neck to the front of the neck.

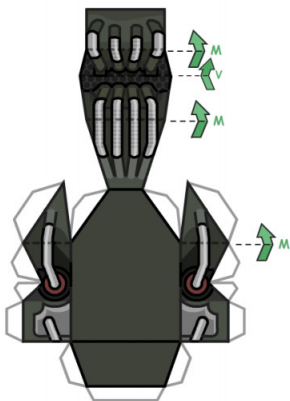
It should be clear then how the top folds down so the top of the head and the face can attach, with the base of the chin fixing last.



Face mask

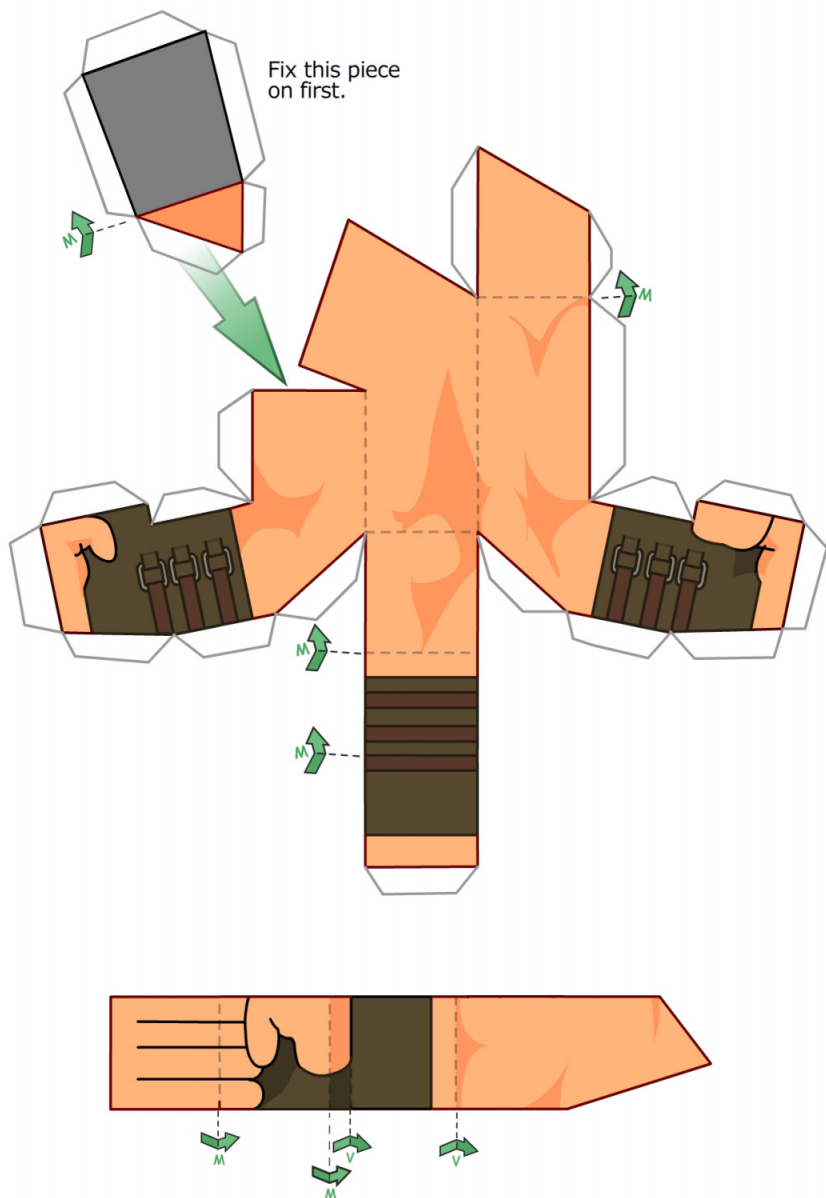
Fold the bottom of the mask forwards first and then stuck the sides to the bottom and to the top of the back. Then fold the front down in place over the mask.

If the 3D face mask seems too fiddly then you can stick this piece on as a mask instead.



Right arm

Build up the main shape of the arm. Once this is built you can stick the front face onto the rest of the arm to complete it. The arms are then attached to the sides of the body.



Left arm

Build up the main shape of the arm. Once this is built you can stick the front face onto the rest of the arm to complete it. The arms are then attached to the sides of the body.

